

Highway 1416 Sanitary Sewer – Construction Update

11/13/2025

Project Summary: Upsize the sanitary sewer line from about Cottonwood Ave to West Gate Rd in the Highway 1416 median to support the growth of Box Elder

Contractor: H&W Contracting, LLC, Sioux Falls, SD
John Rennich, 605.339.8834

Engineer: KLJ Engineering, Rapid City, SD
Tim Hartmann, 605.872.5004

***Note:** A section of Box Elder Road between the approaches to Vermeer High Plains and Harvest Time Free Will Baptist Church will tentatively be **closed beginning Monday, December 1st** to reopen on or before **Monday, December 15th**. The entrance to Box Elder Rd from Highway 1416 will also be closed in this location.

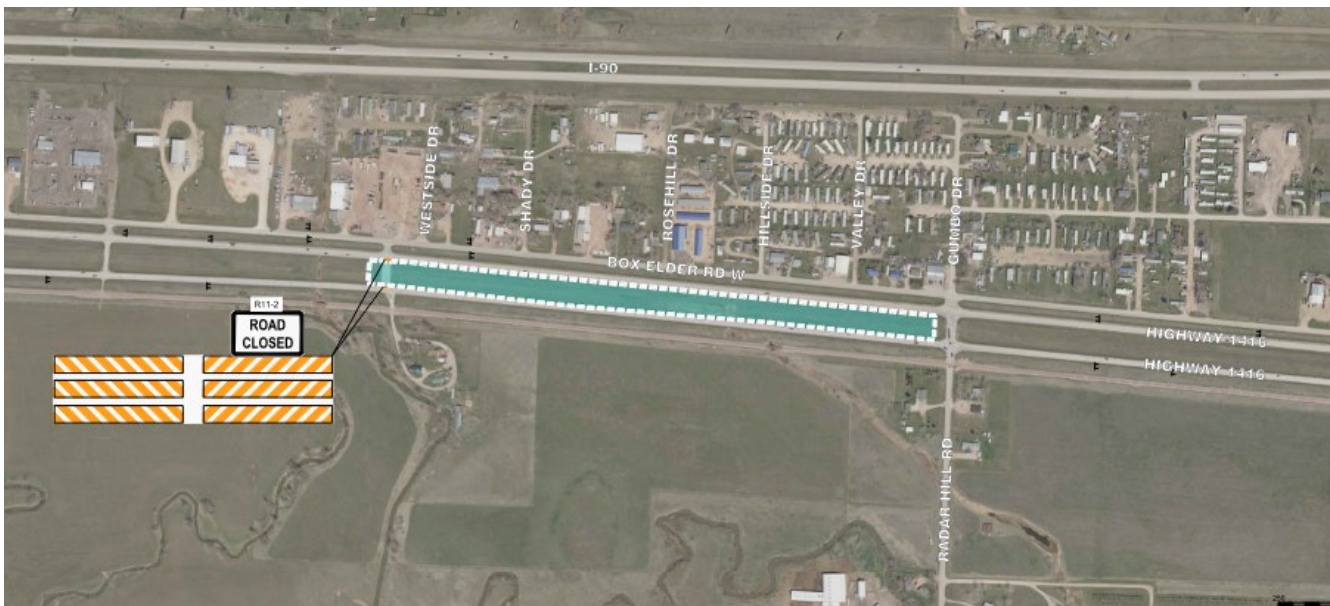
November 17th to November 22nd:

- The first part of the week, work begins in the Highway 1416 median, near the Westside Drive crossover.
- **Important Note** – Westside Drive and Highway 1416 crossover will tentatively be closed beginning **Tuesday, November 18th** for a duration of approximately 7 days.
 - A detour will not be established for this closure. Any vehicles needing use of this detour should proceed to the next available crossover.
 - The crossover closure will not affect passerby traffic on Highway 1416.

November 24th to November 29th:

- Work will wrap up on the Westside Drive crossover in the first part of the week & will reopen.
- Work then continues in the Highway 1416 median, west of the Westside Drive crossing.
- Work will include activities next to Highway 1416, but all lanes will remain open.
- **Note** - Work will be minimal in the latter half of the week due to the Thanksgiving holiday.

Work Area – November 17th to November 25th:



Work Area – November 24th to November 29th:

